

Solid State Pressure Sensor

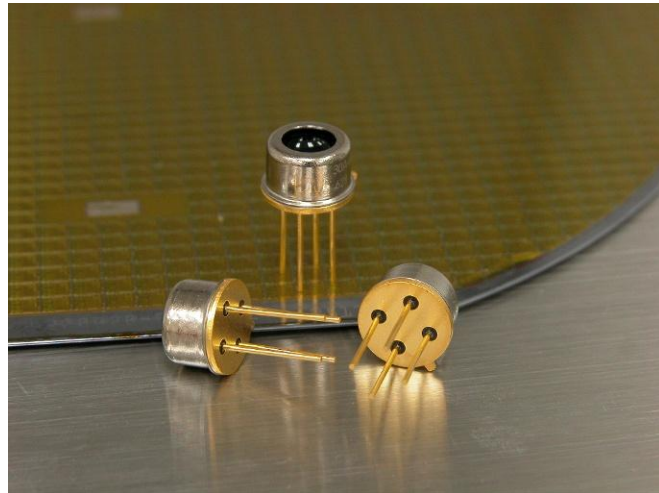
STD Series - Model 60

FEATURES

- Solid State Reliability
- Absolute Pressure
- Rigid Package
- Low Cost

APPLICATIONS

- Barometer
- Cable Fault Detector
- Pneumatics
- Automotive



Sold in North America By:
Servoflo Corporation
75 Allen Street
Lexington, MA 02421
Tel: 781-862-9572

www.servoflo.com / info@servoflo.com

DESCRIPTION

The STD Series model 60 is a silicon MEMs piezoresistive sensor in a reliable TO-5 metal can package. The sensor is suitable for mounting directly onto a printed circuit board.

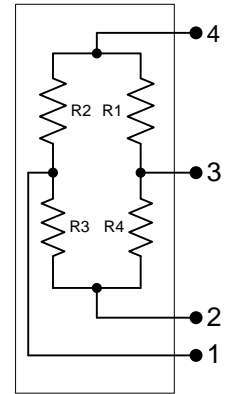
This sensor is designed for extremely cost sensitive OEM applications where the sensing element is integral to the OEM equipment. They are intended for use with non-corrosive, non-ionic media.

The sensors are available in full scale ranges from 15 psia to 100 psia. They can also be packaged with specific pressure die to meet custom applications. For custom parts, please contact the factory for details.

Characteristics

Unless otherwise specified, all parameters are measured at 25 °C and excitation of 5V

Parameters	Min	Typ	Max	Unit
Excitation Current		1.5		mA
Excitation Voltage	0	5.0	10.0	Volts
Span	60	100	140	mV
Offset – 0 psia	-30		+30	mV
Bridge Impedance	4	5	6	kohm
Linearity ^{NOTE1}	-0.3	±0.1	+0.3	%FS
TC - Span ^{NOTE2}		-22±5		%FS/100°C
TC - Offset ^{NOTE2}		±8		%FS/100°C
Hysteresis		±0.2		%FS
Temp - Operating	-40		+125	°C
Temp - Storage	-40		+150	°C
Over Pressure			2X	Rated Pres.

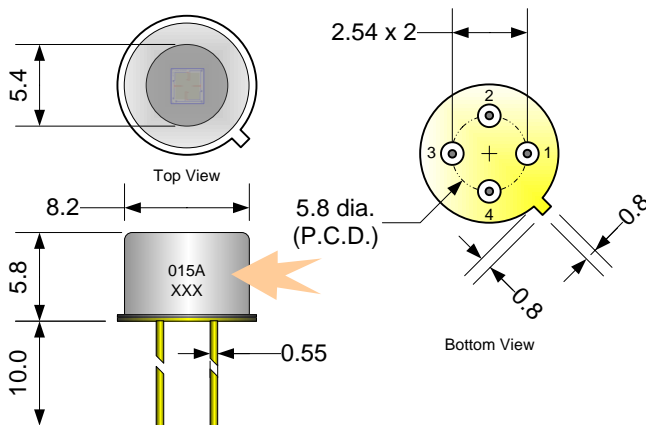


Equivalent Circuit

Notes:

1. Best Fit Straight Line
2. Temperature coefficient is measured from 0 °C to 70 °C
3. Wetted material contains Ni and Silicone Gel

Dimension



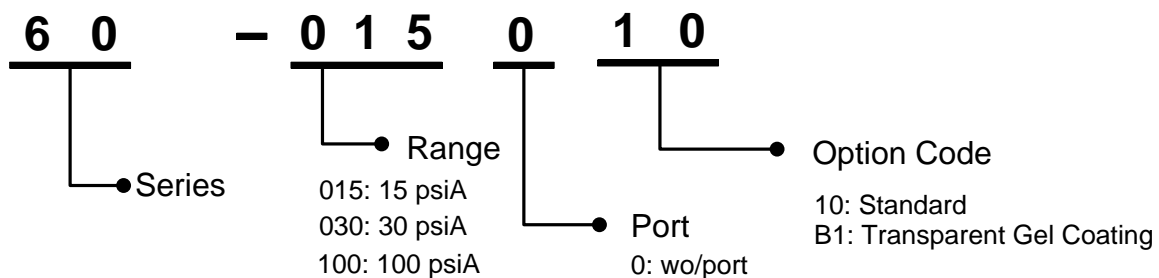
Soldering leads: max. 250 °C 5s

Lead	Connection
1	- Vo
2	- Sup
3	+Vo
4	+Sup

NOTES:

1. Pins and header are Kovar with gold plating
2. Cap wo/tube is made of SPCC with nickel plating
3. Cap w/tube is made of brass with nickel plating

Ordering Information



The rest of this page has been left intentionally blank

Disclaimer/Warranty/Notice

Sensormate Enterprise Co. Ltd products are not authorized for use in applications where failure could result in loss of life or injury. While Sensormate provides application assistance personally, through our literature and website, it is the responsibility of the customer to determine the suitability of the product for the intended application.

All information provided is believed to be accurate at the time of publishing however Sensormate Enterprise Co. Ltd reserves the right to make changes without prior notice.

Sensormate Enterprise Co.Ltd warrants its products to be free of manufacturing defects for a period of 12 months from the date of purchase. The maximum liability, expressed or implied shall be limited to a direct replacement of those products Sensormate finds defective. The foregoing is the Buyers Sole remedy in lieu of all other warranties, expressed or implied including those of merchantability and fitness for a particular purpose.

Sold in North America By:

Servoflo Corporation

75 Allen Street

Lexington, MA 02421

Tel: 781-862-9572

www.servoflo.com / info@servoflo.com



10, Industries E. Rd. III, Lukang,
Chang Hua, Taiwan 50544
Tel: +8864 7811839 Fax: +8864 7811837
www.smate.com.tw

3/3

Ver 1.4 26 Dec 16