

Solid State Pressure Sensor

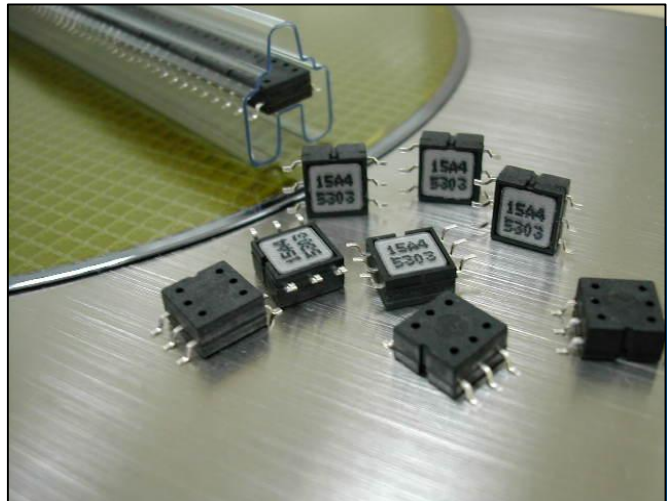
SMP Series – Model 31

FEATURES

- Low Cost
- Miniature SMD
- Absolute Pressure
- Small Foot Print
- High Sensitivity

APPLICATIONS

- Barometric Pressure
- Altimeter
- Medical Devices
- White Goods



Sold in North America By:
Servoflo Corporation
75 Allen Street
Lexington, MA 02421
Tel: 781-862-9572

www.servoflo.com / info@servoflo.com

DESCRIPTION

The SMP Series are uncompensated high performance die in a plastic surface mount package. They are absolute pressure sensors fabricated by bonding a micromachined silicon diaphragm to Pyrex glass in a vacuum. Uniform span and offset distribution result from precise implant and etching control. The result is long-term offset stability that is suitable for barometric pressure measurement.

This sensor provides a solution for high volume OEM manufacturers to use pressure sensors at costs close to bare die price, without the need to handle, attach or wire bond silicon die.

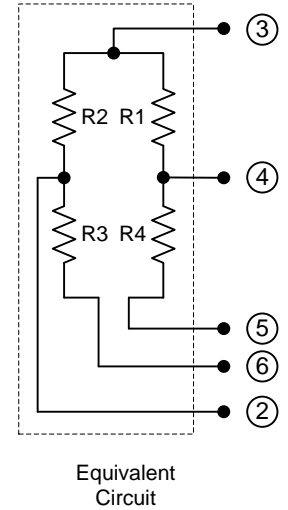
In order to provide maximum flexibility, the sensors are available with several custom features including pressure range, impedance and pin out configuration.

For custom products, please contact the factory.

Characteristics 15 psiA Version

Unless otherwise specified, all parameters are measured at 25 °C and excitation of 5.0 Vdc

Parameters	Min	Typ	Max	Unit
Excitation Voltage		5.0	10	V
Excitation Current		1.0		mA
Span	65	100	140	mV
Offset	-30		+30	mV
Bridge Impedance	4	5	6	kohm
Linearity ^{NOTE1}		±0.3		%FS
TC - Span ^{NOTE2}	-17.5	-19.5	-23.5	%FS/100°C
TC - Offset ^{NOTE2}		±8		%FS/100°C
Pressure Overload			3X	Rated FS
Temp - Operating	-40		+85	°C
Temp - Storage	-40		+125	°C

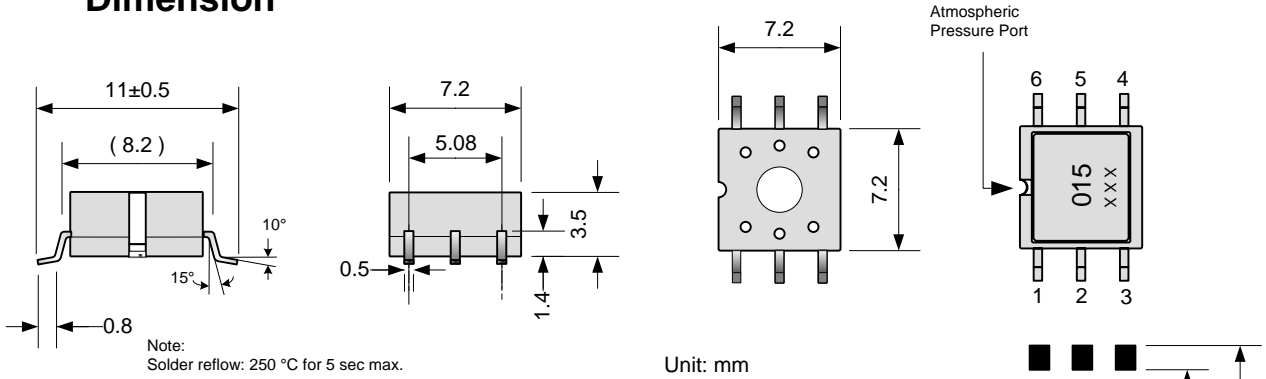


Notes:

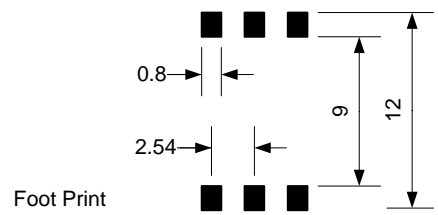
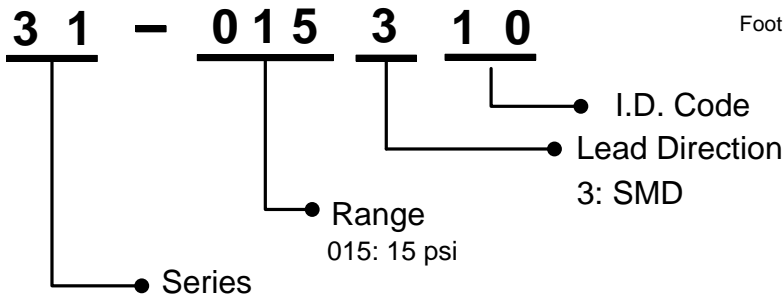
1. Best Fit Straight Line
2. Temperature coefficient is measured from -10 °C to 50 °C
3. Wetted material contains glass, RTV, PPA, Au, Ag and silicon

Lead	Connection
5,6	INPUT -
3	INPUT +
4	OUTPUT +
2	OUTPUT -

Dimension



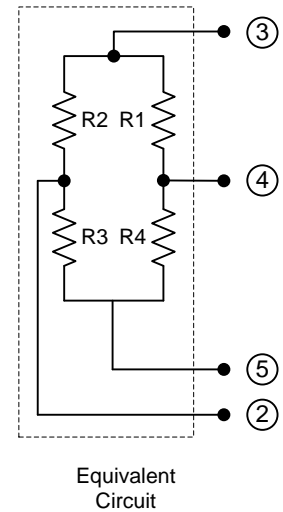
Ordering Information



Characteristics 100 psiA Version

Unless otherwise specified, all parameters are measured at 25 °C and excitation of 5.0 Vdc

Parameters	Min	Typ	Max	Unit
Excitation Voltage		5.0	10	V
Pressure Range		100		psi
Span	65	100	140	mV
Offset	-30		+30	mV
Bridge Impedance	4	5	6	kohm
Linearity ^{NOTE1}		±0.3		%FS
TC - Span ^{NOTE2}	-12	-19.5	-23.5	%FS/100°C
TC - Offset ^{NOTE2}		±8		%FS/100°C
Pressure Overload			1.5X	Rated FS
Temp - Operating	-40		+85	°C
Temp - Storage	-40		+125	°C

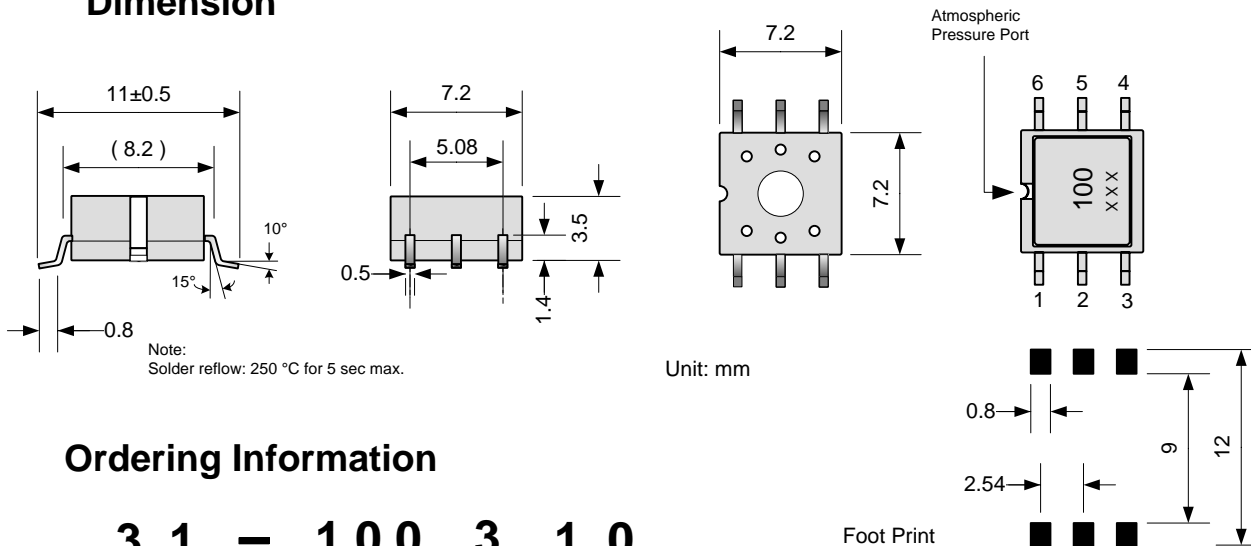


Notes:

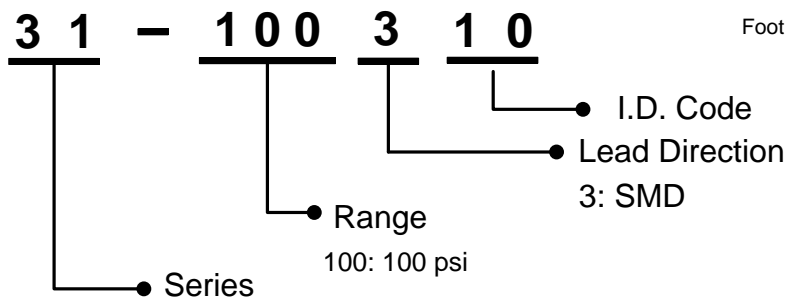
1. Best Fit Straight Line
2. Temperature coefficient is measured from -10 °C to 50 °C
3. Wetted material contains glass, RTV, PPA, Au, Ag and silicon

Lead	Connection
5	INPUT -
3	INPUT +
4	OUTPUT +
2	OUTPUT -

Dimension



Ordering Information



Disclaimer/Warranty/Notice

Sensormate Enterprise Co. Ltd products are not authorized for use in applications where failure could result in loss of life or injury. While Sensormate provides application assistance personally, through our literature and website, it is the responsibility of the customer to determine the suitability of the product for the intended application.

All information provided is believed to be accurate at the time of publishing however Sensormate Enterprise Co. Ltd reserves the right to make changes without prior notice.

Sensormate Enterprise Co.Ltd warrants its products to be free of manufacturing defects for a period of 12 months from the date of purchase. The maximum liability, expressed or implied shall be limited to a direct replacement of those products Sensormate finds defective. The foregoing is the Buyers Sole remedy in lieu of all other warranties, expressed or implied including those of merchantability and fitness for a particular purpose.

The rest of this page has been left intentionally blank

Sold in North America By:

Servoflo Corporation

75 Allen Street

Lexington, MA 02421

Tel: 781-862-9572

www.servoflo.com / info@servoflo.com