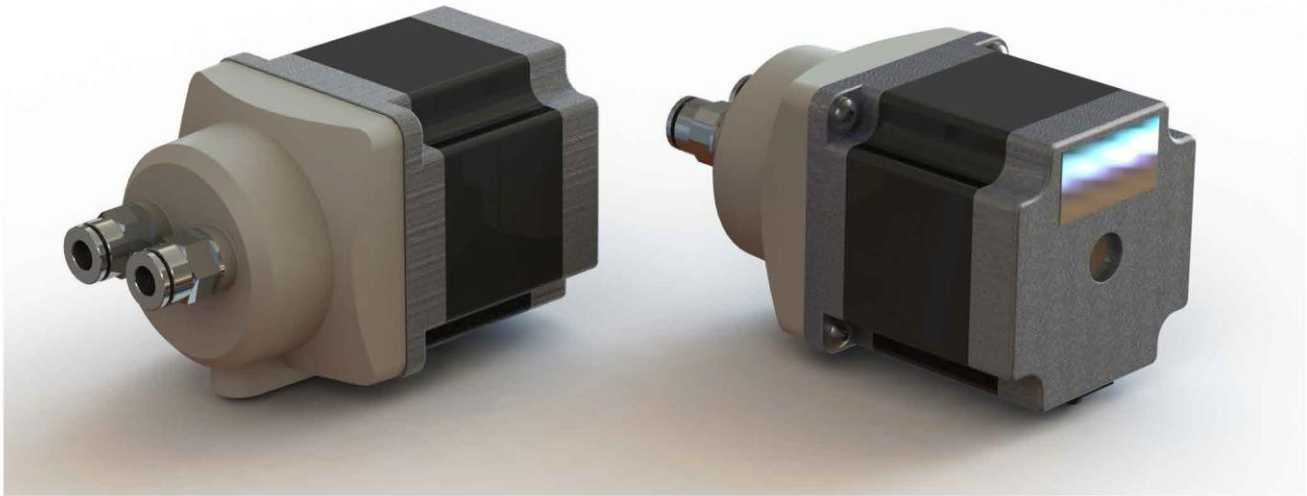


## F2K Flexible Impeller Micropump

### Overview

The F2K pump is a flexible impeller pump that is powered by a stepper motor. The stepper motor enables excellent flow control and precise dosing abilities but must be driven by a suitable stepper motor driver and controller.

### Pump Variants

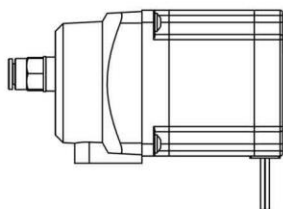
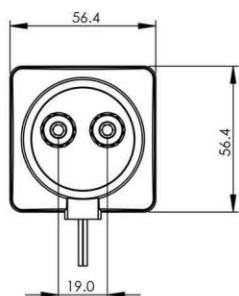
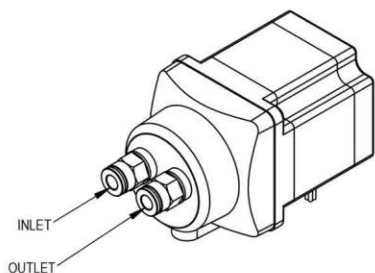
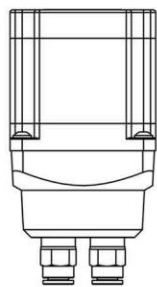


The F2k pump is a flexible impeller pump that is powered by a stepper motor. The stepper motor enables excellent flow control and precise dosing abilities but must be driven by a suitable stepper motor driver and controller.



### Features

- Stepper Motor Driven
- Excellent flow control
- Reversible Flow
- Compatible with a wide range of tubing connectors



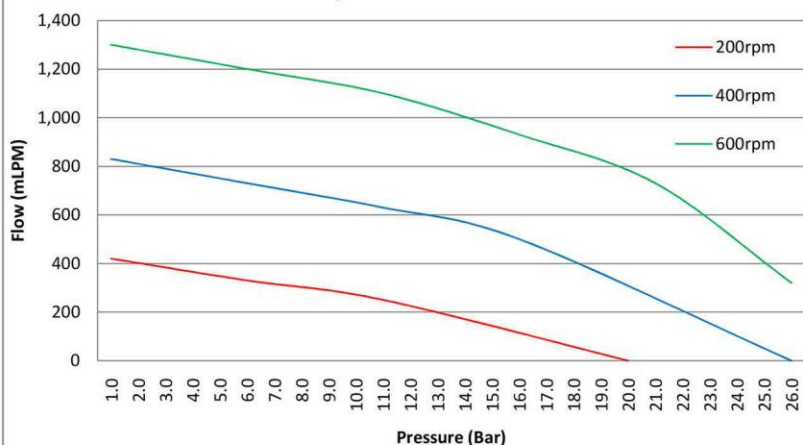
## Materials

- Acetal
- Neoprene
- Stainless Steel
- Viton
- PTFE

## Performance Data

- Small Size                      88 x 54 x 54mm
- Weight                              773 g
- Operating Temp                -20 to 100 deg C
- Dosing Pump
- Noise Levels                      25dB  
Measured at a distance of 1m with a 50dB ambient noise level
- Viscosity upto                    25,000 cSt
- MTBF Stock Pumps            1000hrs

**F2k Flow / Pressure**



**F2k Power / Pressure**

